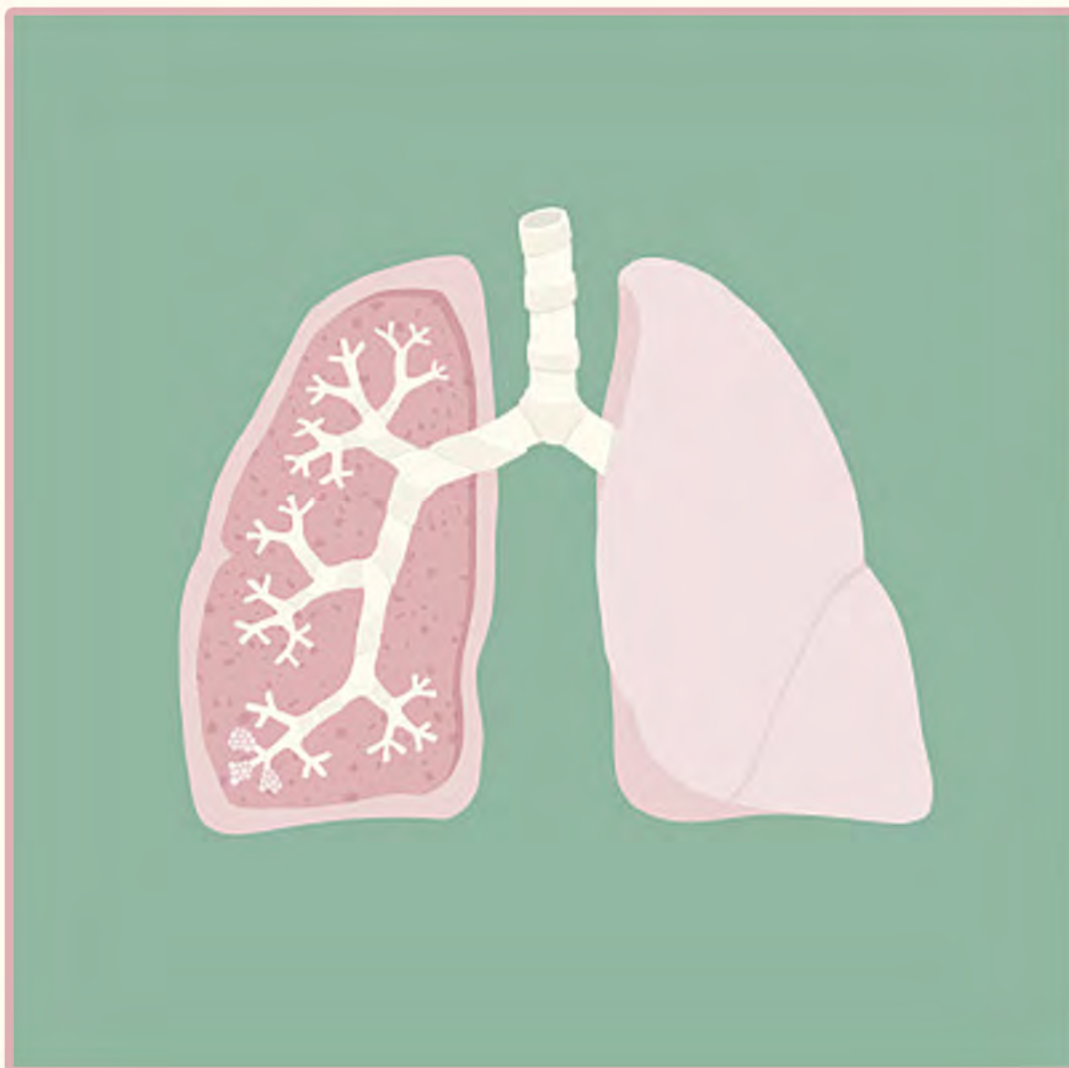


# ELISA Kits

## for Respiratory Medicine Research



//

急/慢性支气管炎

支气管哮喘

肺结核

呼吸衰竭

急性肺水肿

肺不张

上呼吸道感染

肺性脑病（喘症）

//

**Elabscience®**

Elabscience Biotechnology Co.,Ltd



## 呼吸系统疾病

呼吸系统疾病是一种常见病、多发病，呼吸道疾病是影响包括鼻腔通道、支气管和肺部在内的气道的疾病。其范围包括从急性感染（例如肺炎和支气管炎）到慢性病症（例如哮喘和慢性阻塞性肺病）。统计数字显示，不管是在农村还是城市，呼吸系统疾病发病率都居高不下。

WHO 把慢性呼吸疾病、心脑血管疾病、恶性肿瘤、糖尿病与代谢性疾病列为四大慢病，强调要给予同等重视。呼吸道疾病的危险因素广泛存在，比如抽烟、空气污染、过敏原、职业性因素、感染等。

## 用于呼吸系统疾病研究的 ELISA 试剂盒

Elabscience 根据往期文献将临床 9 种呼吸系统疾病（急 / 慢性支气管炎、支气管哮喘、肺结核、呼吸衰竭等）涉及指标进行了整理，便于呼吸内科疾病研究人员能快速查找并获取指标信息。请访问 Elabscience 官网（[www.elabscience.cn](http://www.elabscience.cn)），以获取详细产品信息。

## 客户发表文献展示（呼吸系统相关）

1. Lê V B, Schneider J G, Boergeling Y, et al. Platelet Activation And Aggregation Promote Lung Inflammation And Influenza Virus Pathogenesis [J]. American Journal of Respiratory & Critical Care Medicine, 2015, 191(7): 804-819.
2. Hrinčius E R, Liedmann S, Finkelstein D, et al. NS1 Mediated Inhibition Of c-Abl Results In Acute Lung Injury And Priming For Bacterial Co-Infections; Insights Into 1918 H1N1 Pandemic [J]. The Journal of Infectious Diseases, 2014.
3. Chen Z R, Zhang G B, Wang Y Q, et al. Therapeutic Effects of Anti-B7-H3 Antibody in an Ovalbumin-Induced Mouse Asthma Model [J]. Annals of Allergy Asthma & Immunology, 2013, 111: 276-281.
4. Xue Z, Zhang X G, Wu J, et al. Effect Of Treatment With Geraniol On Ovalbumin-Induced Allergic Asthma In Mice [J]. Annals of Allergy Asthma & Immunology, 2016, 116(6): 506-513.
5. Li H T, Zhang T T, Chen Z G, et al. Intranasal Administration Of CpG Oligodeoxynucleotides Reduces Lower Airway Inflammation In A Murine Model Of Combined Allergic Rhinitis And Asthma Syndrome [J]. International Immunopharmacology, 2015, 28: 390-398.



## 呼吸系统疾病研究中的热点指标

Cat. No.	Product Name	Detection Range	Sensitivity	Test Method
E-EL-H0223c	Human 5-LO(Arachidonate 5-Lipoxygenase) ELISA Kit	0.16--10 ng/mL	0.09 ng/mL	Sandwich
E-EL-H0002c	Human ACE(Angiotensin I Converting Enzyme) ELISA Kit	0.78--50 ng/mL	0.47 ng/mL	Sandwich
E-EL-H0262c	Human ADA(Adenosine Deaminase) ELISA Kit	0.31--20 ng/mL	0.19 ng/mL	Sandwich
E-EL-H2181c	Human ALB(Albumin) ELISA Kit	0.16--10 ng/mL	0.09 ng/mL	Sandwich
E-EL-H0744c	Human CC16(Clara Cell 16kD protein) ELISA Kit	62.5--4000 pg/mL	37.5 pg/mL	Sandwich
E-EL-H1766c	Human CFTR(Cystic Fibrosis Transmembrane Conductance Regulator) ELISA Kit	0.16--10 ng/mL	0.09 ng/mL	Sandwich
E-EL-H0043c	Human CRP(C-Reactive Protein) ELISA Kit	0.39--25 ng/mL	0.23 ng/mL	Sandwich
E-EL-H0999c	Human CYSLTR1(Cysteinyl Leukotriene Receptor 1) ELISA Kit	0.31--20 ng/mL	0.19 ng/mL	Sandwich
E-EL-H0025c	Human ECF/CCL11(Eosinophil Chemotactic Factor) ELISA Kit	15.63--1000 pg/mL	9.38 pg/mL	Sandwich
E-EL-H0064c	Human ET-1(Endothelin 1) ELISA Kit	1.25--80 pg/mL	0.75 pg/mL	Sandwich
E-EL-H0108c	Human IFN- $\gamma$ (Interferon Gamma) ELISA Kit	15.63--1000 pg/mL	9.38 pg/mL	Sandwich
E-EL-H0149c	Human IL-1 $\beta$ (Interleukin 1 Beta) ELISA Kit	7.81--500 pg/mL	4.69 pg/mL	Sandwich
E-EL-H0101c	Human IL-4(Interleukin 4) ELISA Kit	31.25--2000 pg/mL	18.75 pg/mL	Sandwich
E-EL-H0191c	Human IL-5(Interleukin 5) ELISA Kit	15.63--1000 pg/mL	9.38 pg/mL	Sandwich
E-EL-H0102c	Human IL-6(Interleukin 6) ELISA Kit	7.81--500 pg/mL	4.69 pg/mL	Sandwich
E-EL-H0103c	Human IL-10(Interleukin 10) ELISA Kit	7.81--500 pg/mL	4.69 pg/mL	Sandwich
E-EL-H0104c	Human IL-13(Interleukin 13) ELISA Kit	15.63--1000 pg/mL	9.38 pg/mL	Sandwich
E-EL-H1002c	Human IRAK3(Interleukin 1 Receptor Associated Kinase 3) ELISA Kit	0.78--50 ng/mL	0.47 ng/mL	Sandwich
E-EL-H0020c	Human MCP-1(Monocyte Chemotactic Protein 1) ELISA Kit	15.63--1000 pg/mL	9.38 pg/mL	Sandwich
E-EL-H1946c	Human NE/ELA2(Neutrophil Elastase/Elastase-2) ELISA Kit	0.78--50 ng/mL	0.47 ng/mL	Sandwich
E-EL-H1792c	Human PT(Prothrombin) ELISA Kit	9.38--600 ng/mL	5.63 ng/mL	Sandwich
E-EL-H1379c	Human RNASE3/ECP(Ribonuclease A3/Eosinophil Cationic Protein) ELISA Kit	39.06--2500 pg/mL	23.44 pg/mL	Sandwich
E-EL-H0035c	Human sCD40L(Soluble Cluster of Differentiation 40 Ligand) ELISA Kit	62.5--4000 pg/mL	37.5 pg/mL	Sandwich
E-EL-H1267c	Human SP-B(Pulmonary Surfactant Associated Protein B) ELISA Kit	0.78--50 ng/mL	0.47 ng/mL	Sandwich
E-EL-H1268c	Human SP-C(Pulmonary Surfactant Associated Protein C) ELISA Kit	0.31--20 ng/mL	0.19 ng/mL	Sandwich
E-EL-H2132c	Human STAT3(Signal Transducer and Activator of Transcription 3) ELISA Kit	0.31--20 ng/mL	0.19 ng/mL	Sandwich
E-EL-H0110c	Human TGF- $\beta$ 1(Transforming Growth Factor Beta 1) ELISA Kit	31.25--2000 pg/mL	18.75 pg/mL	Sandwich
E-EL-H0109c	Human TNF- $\alpha$ (Tumor Necrosis Factor Alpha) ELISA Kit	7.81--500 pg/mL	4.69 pg/mL	Sandwich
E-EL-H0910c	Human TP53(Tumor Protein p53) ELISA Kit	78.13--5000 pg/mL	46.88 pg/mL	Sandwich
E-EL-H0965c	Human $\alpha$ 1-AT(Alpha 1-Antitrypsin) ELISA Kit	3.13--200 ng/mL	1.88 ng/mL	Sandwich

## 其它呼吸系统疾病研究中的常用指标

Cat. No.	Product Name	Detection Range	Sensitivity	Test Method
E-EL-H2525c	Human ADAM33 (A Disintegrin And Metalloprotease 33) ELISA Kit	78.13--5000 pg/mL	46.88 pg/mL	Sandwich
E-EL-H0275c	Human ADM(Adrenomedullin) ELISA Kit	15.63--1000 pg/mL	9.38 pg/mL	Sandwich
E-EL-H0071c	Human AFGF/FGF1(Acidic Fibroblast Growth Factor 1) ELISA Kit	31.25--2000 pg/mL	18.75 pg/mL	Sandwich
E-EL-H0518c	Human ATM(Ataxia Telangiectasia Mutated) ELISA Kit	0.16--10 ng/mL	0.09 ng/mL	Sandwich
E-EL-H0483c	Human bFGF/FGF2(Basic Fibroblast Growth Factor) ELISA Kit	125--8000 pg/mL	75 pg/mL	Sandwich
E-EL-H0562c	Human BAX(Bcl-2 Associated X Protein) ELISA Kit	0.78--50 ng/mL	0.47 ng/mL	Sandwich
E-EL-H2188c	Human BMG/ $\beta$ 2-MG(Beta-2-Microglobulin) ELISA Kit	31.25--2000 ng/mL	18.75 ng/mL	Competitive
E-EL-H2327c	Human CDKN2A(Cyclin Dependent Kinase Inhibitor 2A) ELISA Kit	0.63--40 ng/mL	0.38 ng/mL	Sandwich
E-EL-H1641c	Human COL18 $\alpha$ 1(Collagen Type X VIII Alpha 1) ELISA Kit	0.16--10 ng/mL	0.09 ng/mL	Sandwich
E-EL-H2069c	Human CTLA4(Cytotoxic T-Lymphocyte Associated Antigen 4) ELISA Kit	0.16--10 ng/mL	0.09 ng/mL	Sandwich
E-EL-H0384c	Human CYP1B1(Cytochrome P450, family 1, subfamily B, polypeptide 1) ELISA Kit	0.16--10 ng/mL	0.09 ng/mL	Sandwich
E-EL-H0060c	Human EGFR(Epidermal Growth Factor Receptor) ELISA Kit	0.31--20 ng/mL	0.19 ng/mL	Sandwich
E-EL-H0067c	Human FAS/CD95(Factor Related Apoptosis) ELISA Kit	31.25--2000 pg/mL	18.75 pg/mL	Sandwich
E-EL-H1263c	Human FBLN5(Fibulin 5) ELISA Kit	3.13--200 ng/mL	1.88 ng/mL	Sandwich
E-EL-H2266c	Human FBN1(Fibrillin 1) ELISA Kit	0.31--20 ng/mL	0.19 ng/mL	Sandwich
E-EL-H0345c	Human FGFR1(Fibroblast Growth Factor Receptor 1) ELISA Kit	0.16--10 ng/mL	0.09 ng/mL	Sandwich
E-EL-H0075c	Human Flt3L(FMS-like Tyrosine Kinase 3 Ligand) ELISA Kit	15.63--1000 pg/mL	9.38 pg/mL	Sandwich
E-EL-H0179c	Human FN(Fibronectin) ELISA Kit	1.56--100 ng/mL	0.94 ng/mL	Sandwich
E-EL-H0695c	Human FOS(V-Fos FBJ Murine Osteosarcoma Viral Oncogene Homolog) ELISA Kit	0.16--10 ng/mL	0.09 ng/mL	Sandwich
E-EL-H1906c	Human GDF1(Growth Differentiation Factor 1) ELISA Kit	31.25--2000 pg/mL	18.75 pg/mL	Sandwich
E-EL-H1888c	Human GFAP(Glial Fibrillary Acidic Protein) ELISA Kit	0.31--20 ng/mL	0.19 ng/mL	Sandwich
E-EL-H0037c	Human GP39(Glycoprotein 39, Cartilage) ELISA Kit	62.5--4000 pg/mL	37.5 pg/mL	Sandwich
E-EL-H0084c	Human HGF(Hepatocyte Growth Factor) ELISA Kit	125--8000 pg/mL	75 pg/mL	Sandwich
E-EL-H2172c	Human HO1(Heme Oxygenase 1) ELISA Kit	0.31--20 ng/mL	0.19 ng/mL	Sandwich
E-EL-H0089c	Human IL-1ra/IL-1F3(Interleukin 1 Receptor Antagonist) ELISA Kit	31.25--2000 pg/mL	18.75 pg/mL	Sandwich
E-EL-H0088c	Human IL-1 $\alpha$ (Interleukin 1 Alpha) ELISA Kit	3.91--250 pg/mL	2.34 pg/mL	Sandwich
E-EL-H0180c	Human IL-9(Interleukin 9) ELISA Kit	15.63--1000 pg/mL	9.38 pg/mL	Sandwich
E-EL-H0253c	Human IL-18(Interleukin 18) ELISA Kit	15.63--1000 pg/mL	9.38 pg/mL	Sandwich
E-EL-H0186c	Human KIM-1(Kidney Injury Molecule 1) ELISA Kit	0.16--10 ng/mL	0.09 ng/mL	Sandwich
E-EL-H2182c	Human KRAS(V-Ki-Ras2 Kirsten Rat Sarcoma Viral Oncogene Homolog) ELISA Kit	0.31--20 ng/mL	0.19 ng/mL	Sandwich
E-EL-H1000c	Human LACT $\beta$ ( $\beta$ -Lactamase) ELISA Kit	0.31--20 ng/mL	0.19 ng/mL	Sandwich
E-EL-H1441c	Human MMP-1(Matrix Metalloproteinase 1) ELISA Kit	0.16--10 ng/mL	0.09 ng/mL	Sandwich

Cat. No.	Product Name	Detection Range	Sensitivity	Test Method
E-EL-H1451c	Human MMP-9(Matrix Metalloproteinase 9) ELISA Kit	31.25--2000 pg/mL	18.75 pg/mL	Sandwich
E-EL-H2281c	Human MUC7(Mucin 7) ELISA Kit	0.31--20 ng/mL	0.19 ng/mL	Sandwich
E-EL-H0857c	Human MYC(V-Myc Myelocytomatosis Viral Oncogene Homolog) ELISA Kit	0.16--10 ng/mL	0.09 ng/mL	Sandwich
E-EL-H0755c	Human NOS3/eNOS(Nitric Oxide Synthase 3, Endothelial) ELISA Kit	62.5--4000 pg/mL	37.5 pg/mL	Sandwich
E-EL-H0985c	Human PDGFRβ(Platelet Derived Growth Factor Receptor Beta) ELISA Kit	0.16--10 ng/mL	0.09 ng/mL	Sandwich
E-EL-H0119c	Human REN(Renin) ELISA Kit	31.25--2000 pg/mL	18.75 pg/mL	Sandwich
E-EL-H1113c	Human SOD1(Superoxide Dismutase 1, Soluble) ELISA Kit	62.5--4000 pg/mL	37.5 pg/mL	Competitive
E-EL-H1266c	Human SP-A1(Pulmonary surfactant-associated protein A1) ELISA Kit	15.63--1000 pg/mL	9.38 pg/mL	Sandwich
E-EL-H1269c	Human SP-D(Pulmonary surfactant-associated protein D) ELISA Kit	1.56--100 ng/mL	0.94 ng/mL	Sandwich
E-EL-H2130c	Human STAT1(Signal Transducer and Activator of Transcription 1) ELISA Kit	0.16--10 ng/mL	0.09 ng/mL	Sandwich
E-EL-H0706c	Human TERT(Telomerase Reverse Transcriptase) ELISA Kit	0.16--10 ng/mL	0.09 ng/mL	Sandwich
E-EL-H0951c	Human TLR-2(Toll-like Receptor 2) ELISA Kit	0.31--20 ng/mL	0.19 ng/mL	Sandwich
E-EL-H1539c	Human TLR-4(Toll-like Receptor 4) ELISA Kit	0.31--20 ng/mL	0.19 ng/mL	Sandwich
E-EL-H1598c	Human TSLP(Thymic Stromal Lymphopoietin) ELISA Kit	31.25--2000 pg/mL	18.75 pg/mL	Sandwich
E-EL-H0439c	Human TTN(Titin) ELISA Kit	0.16--10 ng/mL	0.09 ng/mL	Sandwich
E-EL-H1095c	Human VTN(Vitronectin) ELISA Kit	3.13--200 ng/mL	1.88 ng/mL	Sandwich





网 址: [www.elabscience.cn](http://www.elabscience.cn)

电 话: 027-87526315

E-mail: [techsupport@elabscience.cn](mailto:techsupport@elabscience.cn) [tech@elabscience.cn](mailto:tech@elabscience.cn)

地 址: 武汉市东湖新技术开发区高新大道 858 号生物医药园二期 B18 栋

